

The New Flexible Video Cystoscope **HD-VIEW™**

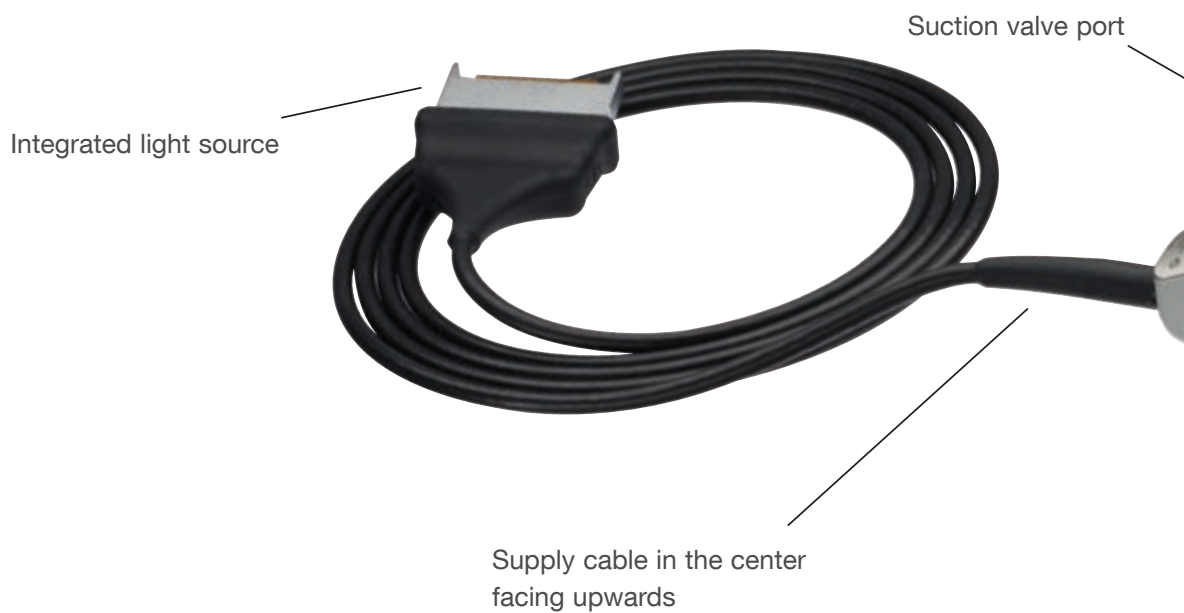
High Performance by **D**efinition



The New Flexible Video Cystoscope HD-VIEW™

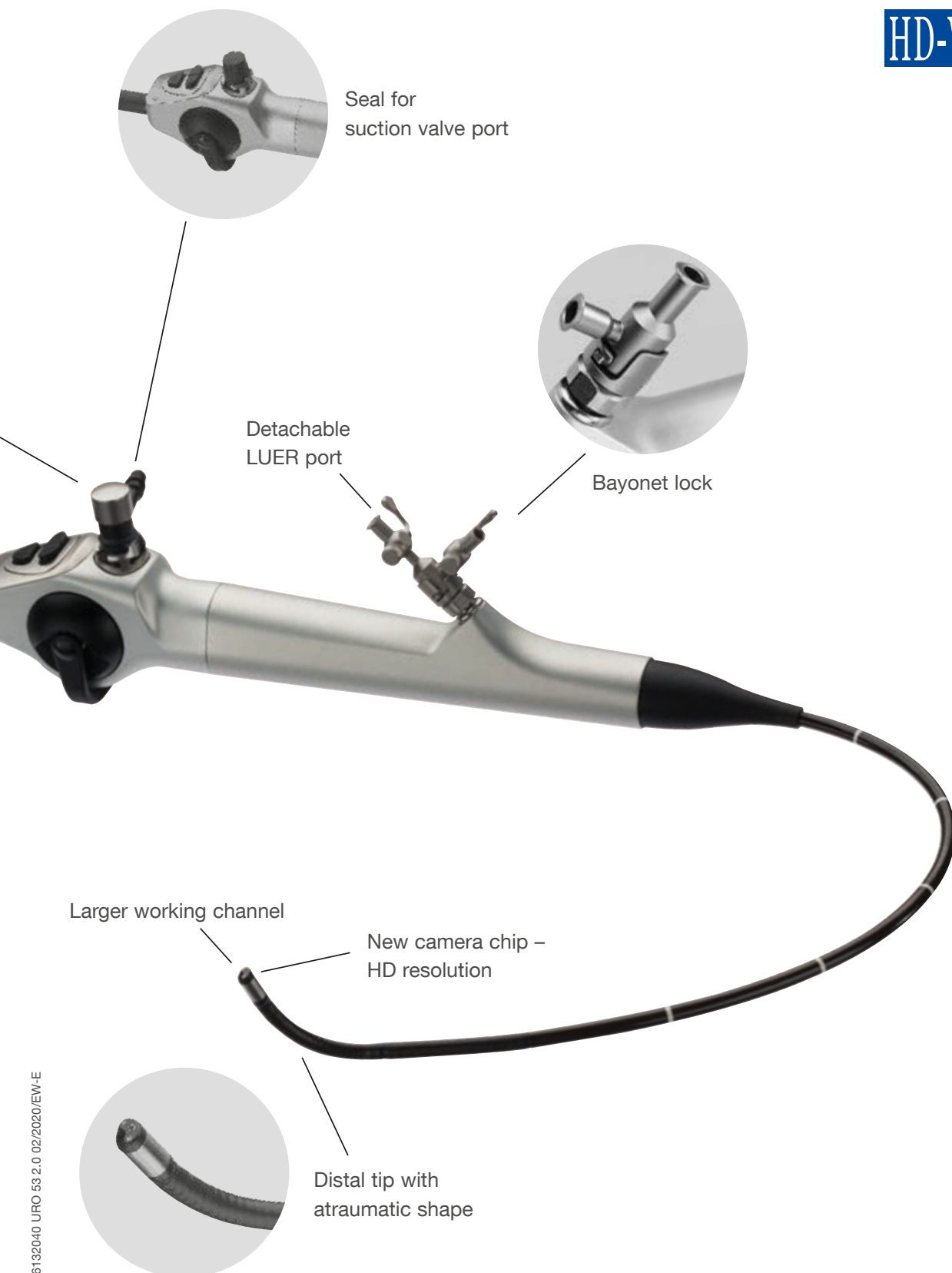
New technologies and extensive market experience combined in one product

The new flexible cystoscope is able to meet increasing demands on image quality in flexible cystoscopy as well as percutaneous applications. In addition, the new suction valve provides an effective method for rapid emptying of the bladder. The distal tip has been redesigned to enable easy insertion.



BRILLIANT.

EASY.



FAST.

BRILLIANT with excellent image quality

New camera chip: Replacing the previous CCD chip technology with the future-oriented CMOS-technology delivers a HD resolution for brilliant imaging. The details and colors of the endoscopic image are clear and lifelike and thus allow – in combination with the KARL STORZ S-Technologies – better diagnosis and treatment of tumors.

- **Noticeably higher resolution thanks to camera chip in high definition**

Integrated light source: An LED has been integrated into the handle. Combining the HD chip quality with LED technology delivers much brighter images than those provided by chip-on-the-tip cystoscopes. Furthermore, an external light source is no longer required. This makes the previous model's bulky plug geometry with extra camera and light cables obsolete.

- **Integrated LED technology with automatic exposure**

EASY thanks to convenient handling

Supply cable: The new HD-VIEW™ requires only one supply cable for the camera control unit. The cable is positioned in the center and exits from the top of the handle so that ergonomic handling for both left- and right-handed users is ensured. Moreover, a special light cable as well as manual white balance is no longer necessary. The cystoscope works on a plug-and-play system that is easy to use and balanced in the hand.

- **Central supply cable**

Distal tip: A new atraumatically shaped tip makes insertion into the urethra easier so that patient comfort is increased.

- **10.9 Fr. tip with atraumatic shape**

Detachable LUER port: Various attachments, with or without stopcocks, are available to the user. Separate steam sterilization of these stainless steel parts is also possible.

- **Detachable LUER port for better reprocessing**

BRILLIANT.

EASY.



FAST thanks to optimized suction and working channel

Suction valve port: The HD-VIEW™ is equipped with a suction valve that allows rapid treatment and emptying of the bladder. The user is able to suction urine and even smaller tissue fragments from the bladder. Depending on user requirements, a sterile single-use suction valve or a reusable valve can be utilized. If suction is not required, a seal is available to close off the channel.

- **Suction valve for rapid bladder evacuation**

Larger working channel: The new HD-VIEW™ features a larger working channel to ensure better irrigation, even when instruments are already inserted.

- **7 Fr. working channel**

FAST.

Flexible Video Cysto-Urethroscope

High Performance by Definition



Item no.	Deflection of distal tip	Direction of view	Working length	Working channel	Sheath size	Distal tip outer circumference	Position of working channel	Working channel port	Suction
11272 VHK with positive deflection		0°	37 cm	7 Fr.	16 Fr.	10.9 Fr.	6 o'clock	detachable	yes
11272 VHUK with contrapositive deflection		0°	37 cm	7 Fr.	16 Fr.	10.9 Fr.	6 o'clock	detachable	yes



Further information and the HD-VIEW™ product video is available at

<https://go.karlstorz.com/96132040-en-1>

To obtain the HD-VIEW™ product video, please scan the QR code with your mobile phone.



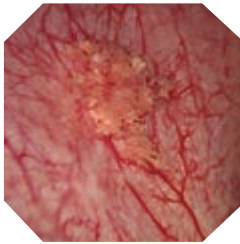
Versatile Visualization Options for Surgery and Diagnostics

IMAGE1 S

The video cysto-urethroscope in combination with the IMAGE1 S™ camera system

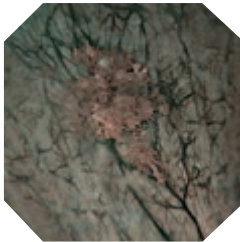
For clear visualization and easier differentiation of tissue structures

- Side-by-side view: Parallel display of the standard image and visualization modes possible
- Brilliant imaging in HD



CLARA and CHROMA

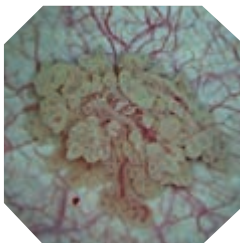
IMAGE1 S™ offers the possibility to combine the CLARA and CHROMA technologies. In this mode, the image is homogeneously illuminated and tissue structures are clearly enhanced by CHROMA.



SPECTRA A*

In SPECTRA A*, reds are removed by spectral filtration. This color change is achieved by shifting color channels. The most delicate red structures, such as blood vessels and the mucosa, are clearly displayed in greenish-blue.

* not for sale in the U.S.



SPECTRA B*

SPECTRA B* reduces the red tones and intensifies the green-blue spectral range. The image background becomes greenish, highlighting blood vessels and capillaries. Nevertheless, the original color impression is largely maintained.

* not for sale in the U.S.

Compatibility



For use with the IMAGE1 S™
Camera Control Unit or TELE PACK +



11272 VHK/ VHUK

IMAGE1 S™ Camera System



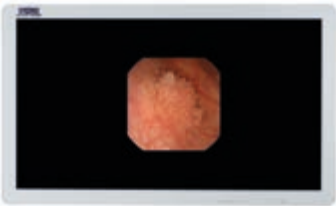
11272 VHK/ VHUK

TELE PACK +



TP 101

For use with all visualization modes



Flexible Video Cysto-Urethroscope

High Performance by Definition



The new HD-VIEW™ cystoscope is available as 2 different sets:

11272 VHK Flexible Video Cystoscope HD-VIEW™, Set, with positive deflection mechanism, with suction channel and integrated light source, deflection of distal tip 210°/140°, direction of view 0°, angle of view 100°, working channel inner diameter 7 Fr., sheath size 16 Fr., working length 37 cm, for use with IMAGE1 S™

The following accessories are included in delivery:

- | | |
|-----------|---|
| 11272 VH | Flexible Video Cystoscope HD-VIEW™ |
| 11014 L | LUER Port with Stopcocks |
| 11014 RA | Cleaning Adaptor , for working channel |
| 11014 DS | Seal with Hole , for working channel and connector |
| 11301 CD1 | Irrigation Adaptor |
| 27677 SX | Case |
| 13242 XL | Leakage Tester |
| 11025 E | Pressure Compensation Cap |

11272 VHUK Same, with contrapositive deflection mechanism, with Double LUER Port 11014 LU

Optional Accessories:

	11301 CE1*	Suction Valve , for single use, package of 20	
	11301 CB1	Suction Valve , reusable	
	11301 P	Seal for Suction Valve Port , to seal the suction channel, for use with flexible Video Cystoscopes HD-VIEW™ 11272 VH/VHU	
	11014 L	LUER Port with Stopcocks , attachment to working channel, for the connection of irrigation tubes and the insertion of instruments	
	11014 LU	Double LUER Port , attachment to working channel, for the connection of irrigation tubes and the insertion of instruments	
	11014 DS	Seal Working Channel Connector , seal with hole, package of 10, for use with LUER Ports 11014 L/LU and Cleaning Adaptor 11014 RA	
	27023 FE	Grasping Forceps for Small Fragments , 5 Fr., single action jaws, flexible, length 73 cm	
	27023 ZE	Biopsy Forceps , 5 Fr., single action jaws, flexible, length 73 cm	



27023 KF*

Stone Basket, nitinol, without tip, straight, 3 Fr., length 70 cm, 4 wires, basket diameter 12 mm, sterile, for single use



27723 T

Coagulation Electrode, unipolar, 4 Fr., length 73 cm



11301 CD1

Irrigation Adaptor, for machine cleaning, reusable, for use with flexible Video Cystoscopes HD-VIEW™ 11272 VH/VHU



11014 RA

Cleaning Adaptor for Working Channel, for connection during machine as well as manual cleaning and disinfection, for use with flexible Video Cystoscopes HD-VIEW™ 11272 VH/VHU



110916-50*

Cleaning Brush, with double-sided brush, length 100 cm, brush diameter 3 mm, unsterile, for single use, package of 50, for use with flexible endoscopes with working channels ranging from diameter 2-2.3 mm



39406 AS

Plastic Container for Flexible Endoscopes, suitable for gas and hydrogen peroxide (Sterrad®) sterilization and storage, external dimensions (w x d x h): 550 x 260 x 90 mm, for use with one flexible endoscope



11014 Y

Fiber Fixation, instrument port for the insertion and fixation of laser fibers, stone baskets, wires etc. in flexible endoscopes



It is recommended to check the suitability of the product for the intended procedure prior to use.



75 Years

*Shaping the Future
of Endoscopy with you*



STORZ
KARL STORZ — ENDOSKOPE
THE DIAMOND STANDARD

KARL STORZ SE & Co. KG
Dr.-Karl-Storz-Straße 34, 78532 Tuttlingen/Germany
Postbox 230, 78503 Tuttlingen/Germany
Phone: +49 7461 708-0
Fax: +49 7461 708-105
E-Mail: info@karlstorz.com
www.karlstorz.com